

# BURTON JAMES QUICK SHIP 2/2022



629



629



629



ALT 38



ALT 38



6001



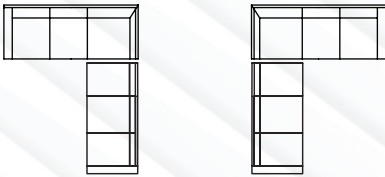
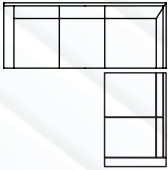



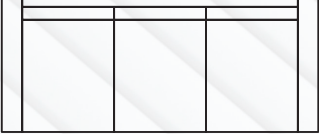

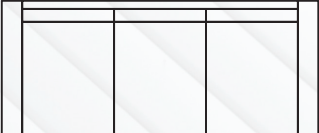
1044



1027



649

<p><b>629</b> <b>SECTIONAL</b></p>  <p><b>*Featuring Cloud Nine Seats and Blend Down Backs</b></p>	<p>LAF/RST RAF/LST 3 SEATS</p> <p>Width: 106" Depth: 41" Height: 39" Seat Height: 20" Arm Width: 6" Arm Height: 26" Seat Depth: 24"</p>	<p>RAF/LSA LAF/RSA 3 SEATS</p> <p>Width: 96" Depth: 41" Height: 39" Seat Height: 20" Arm Width: 6" Arm Height: 26" Seat Depth: 24"</p>	<p><b>LEVEL 1   LEVEL 2</b></p>
<p><b>629</b> <b>SECTIONAL</b></p>  <p><b>*Featuring Cloud Nine Seats and Blend Down Backs</b></p>	<p>LAF/RST 3 SEATS</p> <p>Width: 106" Depth: 41" Height: 39" Seat Height: 20" Arm Width: 6" Arm Height: 26" Seat Depth: 24"</p>	<p>RAF/LSA 2 SEATS</p> <p>Width: 66" Depth: 41" Height: 39" Seat Height: 20" Arm Width: 6" Arm Height: 26" Seat Depth: 24"</p>	<p><b>LEVEL 1   LEVEL 2</b></p>
<p><b>649</b> <b>SECTIONAL</b></p>  <p><b>*Featuring Trillium Seats and Backs</b></p>	<p>LAF/RSA 2 SEATS</p> <p>Width: 96" Depth: 41" Height: 32" Seat Height: 18" Arm Width: 6" Arm Height: 25" Seat Depth: 24"</p>	<p>RAF BUMPER CHAISE</p> <p>Width: 41" Depth: 96" Height: 32" Seat Height: 18" Arm Width: 6" Arm Height: 25" Seat Depth: 24"</p>	<p><b>LEVEL 1   LEVEL 2</b></p>
<p><b>1027</b> <b>CHAIR</b></p>  <p><b>*Featuring Regentaire Seats and Tight Backs</b></p>	<p>CHAIR</p> <p>Width: 29.5" Depth: 36" Height: 32" Seat Height: 18" Arm Height: 25" Seat Depth: 22"</p>		<p><b>LEVEL 1   LEVEL 2</b></p>
<p><b>1044</b> <b>SECTIONAL</b></p>  <p><b>*Featuring Luxe Air Seats and Blend Down Backs</b></p>	<p>LAF/RSA BENCH SEAT</p> <p>Width: 91.5" Depth: 39" Height: 35" Seat Height: 18.5" Arm Width: 10" Arm Height: 29" Seat Depth: 21"</p>	<p>RAF BUMPER CHAISE</p> <p>Width: 93" Depth: 39" Height: 35" Seat Height: 18.5" Arm Width: 10" Arm Height: 29" Seat Depth: 21"</p>	<p><b>LEVEL 1   LEVEL 2</b></p>
<p><b>6001</b> <b>SOFA</b></p>  <p><b>*Featuring Cloud Nine Seats and Blend Down Backs</b></p>	<p>SOFA</p> <p>Width: 98" Depth: 40" Height: 35" Seat Height: 19" Arm Width: 10" Arm Height: 22" Seat Depth: 23"</p>		<p><b>LEVEL 1   LEVEL 2</b></p>
<p><b>ALT 38</b> <b>SECTIONAL</b></p>  <p><b>*Featuring Cloud Nine Seats and Blend Down Backs</b></p>	<p>LAF/RSA 2 SEATS</p> <p>Width: 63" Depth: 38" Height: 36" Seat Height: 19" Arm Width: 9" Arm Height: 24" Seat Depth: 22"</p>	<p>RAF XL CHAISE</p> <p>Width: 49" Depth: 72" Height: 36" Seat Height: 19" Arm Width: 9" Arm Height: 24" Seat Depth: 22"</p>	<p><b>LEVEL 1   LEVEL 2</b></p>
<p><b>ALT 38</b> <b>SOFA</b></p>  <p><b>*Featuring Cloud Nine Seats and Blend Down Backs</b></p>	<p>SOFA</p> <p>Width: 93" Depth: 38" Height: 36" Seat Height: 19" Arm Height: 26" Seat Depth: 22"</p>		<p><b>LEVEL 1   LEVEL 2</b></p>

**ALL FABRICS PERFORMANCE**

**LEVEL 1:** ALEXANDRIA *Powder* | ALEXANDRIA *Stone* | DREAM *Irish Cream* | DREAM *Pina Colada*  
SUGAR SHACK *Denim* | SUGAR SHACK *Nickel* | SUPREME *Seasalt* | SUPREME *Silver*

**LEVEL 2:** GOWAN *Dune* | GOWAN *Coconut* | JUSTIFY *Driftwood* | JUSTIFY *Salt* | LA DEE DA *Dove*  
LA DEE DA *Snow*

**2 Finishes Available:** Black Walnut | Umber

**\*Throw Pillows Not Included\***

## LEVEL 1 Fabrics

ALEXANDRIA *Powder*



ALEXANDRIA *Stone*



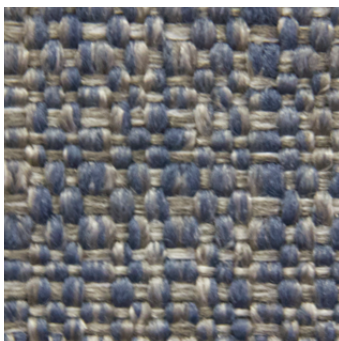
DREAM *Irish Cream*



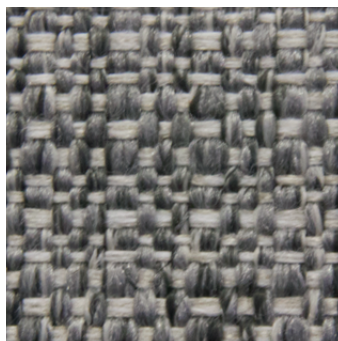
DREAM *Pina Colada*



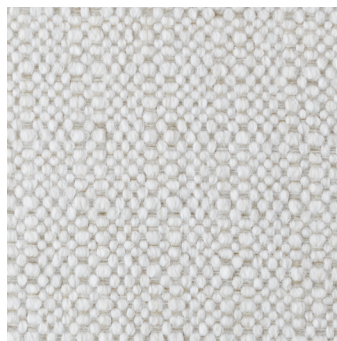
SUGAR SHACK *Denim*



SUGAR SHACK *Nickel*



SUPREME *Seasalt*



SUPREME *Silver*



## LEVEL 2 Fabrics

GOWAN *Coconut*



GOWAN *Dune*



JUSTIFY *Driftwood*



JUSTIFY *Salt*



LA DEE DA *Dove*



LA DEE DA *Snow*



## Finishes

*Black Walnut*



*Umber*

