



MERCER 176

The Mercer contemporary trundle bed features track arm styling with a cut-out area on the inside back, side pillows, buttoned seats, and small exposed block legs for a stylish, functional design.

STANDARD FEATURES

- Spring Construction: Webbing
- Seat Cushion: Tight Seat
- Back Cushion: Tight Back
- Throw Pillows: See Schematics

OVERALL DIMENSIONS

BODY DETAILS

- Overall Width: 89"
- Overall Depth: 36"
- Overall Height: 33"
- Frame Height: 26.5"

SEAT DETAILS

- Seat Height: 17"
- Seat Depth: 24"

ARM DETAILS

- Arm Height: 26.5"
- Arm Width: 4.5"

LEG DETAILS

- Leg Height: 1"

WOOD FINISH (Standard)

- Cream
- Milk
- Cloud
- Natural
- Sandalwood
- Caramel
- French Walnut
- Old Oak
- Umber
- Driftwood
- Shadow
- Black Walnut

SELF WELTING*

- 1/4" Arms
- 1/8" Arms
- 1/4" Body/Base
- 1/8" Body/Base

WOOD FINISH (Premium)*

- Linen
- Pearl
- Sand
- Ash
- Putty
- Slate
- Shale
- Cavalier
- Rustic Gray
- Regent
- Zebra
- Black Lacquer

CONTRAST WELTING*

- 1/4" Arms
- 1/8" Arms
- 1/4" Body/Base
- 1/8" Body/Base

NAILHEAD FINISH*

- French Natural
- Pewter
- Nickel
- Bright Gold
- Antique Brass
- Black Pearl
- Bronze

NAILHEAD SPACING*

- Head-to-Head
- One On, One Off

NAILHEAD LOCATION*

- Arms
- Body/Base

FABRIC PATTERN: _____

FABRIC COLOR: _____

CONTRAST WELT FABRIC PATTERN: _____

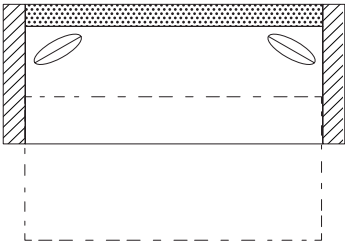
CONTRAST WELT FABRIC COLOR: _____

*Denotes Upcharge

AVAILABLE PIECES

(DRAWINGS NOT TO SCALE)

TRUNDLE BEDS



- #36 - TRUNDLE BED**
89"W x 36"D
Includes 2 - 20" x 20"
throw pillows